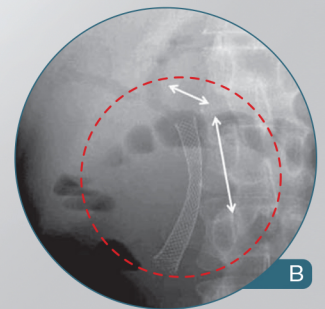
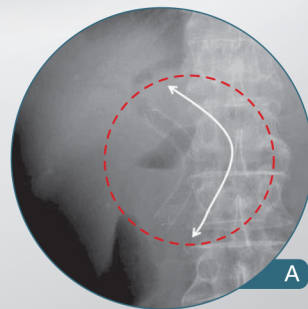
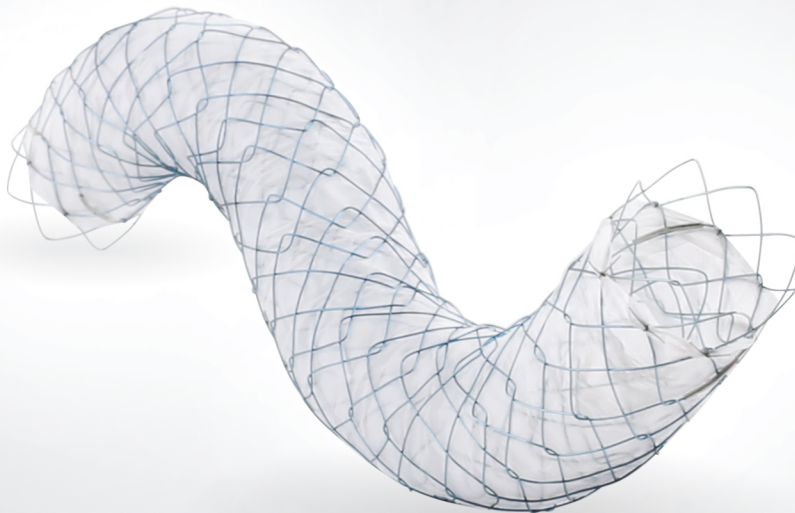


COMVI™ Biliary Stent



Plane abdominal x-ray 1 week after stent insertion

- A. The COMVI™ stent conforms to the shape of the bile duct
- B. The covered Wallstent does not fit the tortuous bile duct

[Surg Endosc. 2010 Jan;24(1): 131-7]

HEAD OFFICE

14, Gojeong-ro, Wolgot-myeon, Gimpo-si, Gyeonggi-do, Korea 10022

SALES OFFICE

Bldg.C 4F, 158 Haneulmaeul-ro, ilsandong-gu, Goyang-si, Gyeonggi-do, Korea 10355
E: contact@stent.net T: +82 31 904 6153 F: +82 31 904 6157

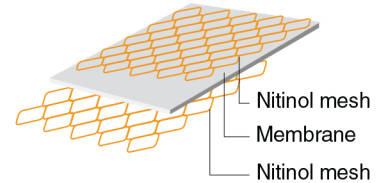
www.taewoongmedical.com

Niti-S™ COMVI™ Biliary Stent

for benign biliary and pancreatic strictures

Features

- **Triple layered construction:** Biocompatible PTFE membrane tube is held between inner and outer mesh
 - Unfixed cell structure enables stent to conform to the shape of bile duct
 - PTFE membrane prevents risk of tissue invasion
 - Outer wire mesh prevents the risk of migration



- **Minimum foreshortening** for accurate stent placement
- **Radiopaque marker:** 4 (four) at both covered part ends

Ordering Information

Endoscopic Approach

► Fully covered

Code	Stent		Delivery				
	Diameter (mm)	Length (cm)	Profile (fr)	Usable Length (cm)			
BC0604F	6	4	8	180			
BC0605F		5					
BC0606F		6					
BC0607F		7					
BC0608F		8					
BC0609F		9					
BC0610F		10					
BC0612F		12					
BC0804F		8			4	8	180
BC0805F					5		
BC0806F					6		
BC0807F					7		
BC0808F	8						
BC0809F	9						
BC0810F	10						
BC0812F	12						
BC1004F	10		4	8	180		
BC1005F			5				
BC1006F			6				
BC1007F			7				
BC1008F		8					
BC1009F		9					
BC1010F		10					
BC1012F		12					

Percutaneous Approach

► Fully covered

Code	Stent		Delivery				
	Diameter (mm)	Length (cm)	Profile (fr)	Usable Length (cm)			
TC0604F	6	4	8	50			
TC0605F		5					
TC0606F		6					
TC0607F		7					
TC0608F		8					
TC0609F		9					
TC0610F		10					
TC0612F		12					
TC0804F		8			4	8	50
TC0805F					5		
TC0806F					6		
TC0807F					7		
TC0808F	8						
TC0809F	9						
TC0810F	10						
TC0812F	12						
TC1004F	10		4	8	50		
TC1005F			5				
TC1006F			6				
TC1007F			7				
TC1008F		8					
TC1009F		9					
TC1010F		10					
TC1012F		12					

* Available both ends 5mm bare [Coding: BC**_B / TC**_B]

Released Article

- * Prospective evaluation of the partially covered nitinol "COMVI™" stent for malignant non hilar biliary obstruction
by Vincenzo Perri et al [Dig Liver Dis. 2013 Apr;45(4):305-9]
- * Measurement of radial and axial forces of biliary self-expandable metallic stents
by Hiroyuki Isayama, MD, PhD et al [Gastrointest Endosc. 2009 Jul;70(1):37-44. doi: 10.1016]
- * Management of distal malignant biliary obstruction with the Comvi stent, a new covered metallic stent
by Hiroyuki Isayama et al [Surg Endosc. 2010 Jan;24(1):131-7]